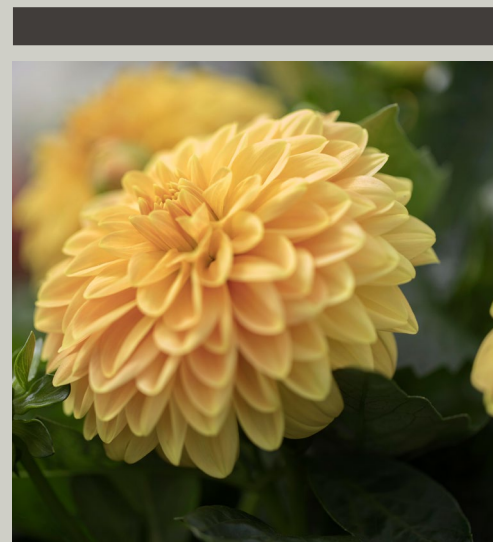


Queen[®] Maya Dahlia[™]

At Queen[®] we are setting new quality standards for Dahlia breeding, focusing on the following selection criteria:

- Large, luxurious flowers in vibrant long-lasting colors.
- Healthy vigorous varieties with short production time – offering optimal use of the production area in the peak season
- Cultivation with reduced need for chemical growth regulation, leading to improved keeping quality.
- Well documented high level of ethylene resistance – ensuring optimal transport and sales performance.
- High resistance to mildew.
- Well documented longevity and ornamental value.
- Optimal plant quality, throughout the season, including early spring and late autumn.



Queen® Maya Dahlia™



Sacniete

-	-	13 · 5"	21 · 8"
---	---	---------	---------



Xiang

-	-	13 · 5"	21 · 8"
---	---	---------	---------



Abha

-	-	13 · 5"	21 · 8"
---	---	---------	---------



Handan

-	-	13 · 5"	21 · 8"
---	---	---------	---------



Eztli

-	-	13 · 5"	21 · 8"
---	---	---------	---------



Halle

-	-	13 · 5"	21 · 8"
---	---	---------	---------



Zan

-	-	13 · 5"	21 · 8"
---	---	---------	---------



Zyanya

-	-	13 · 5"	21 · 8"
---	---	---------	---------



Izel

-	-	13 · 5"	21 · 8"
---	---	---------	---------



Patli

-	-	13 · 5"	21 · 8"
---	---	---------	---------